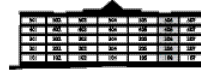
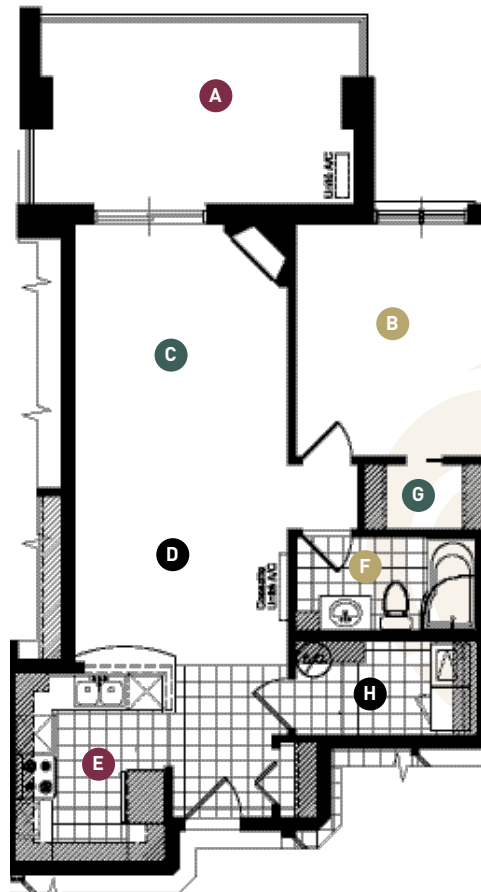


**PLAN LOGEMENT 106 À 506 ± 739 pi<sup>2</sup>**



- A** Terrasse  
18'-0" x 10'-0"
- B** Chambre 1  
10'-0" x 12'-4"
- C** Salon  
11'-4" x 13'-4"
- D** S. à manger  
11'-4" x 10'-0"
- E** Cuisine  
8'-0" x 10'-0"
- F** Salle de bain  
9'-8" x 5'-0"
- G** Penderie  
6'-4" x 3'-6"
- H** Rang. / lav.  
9'-8" x 5'-0"



\* Grandeurs approximatives